

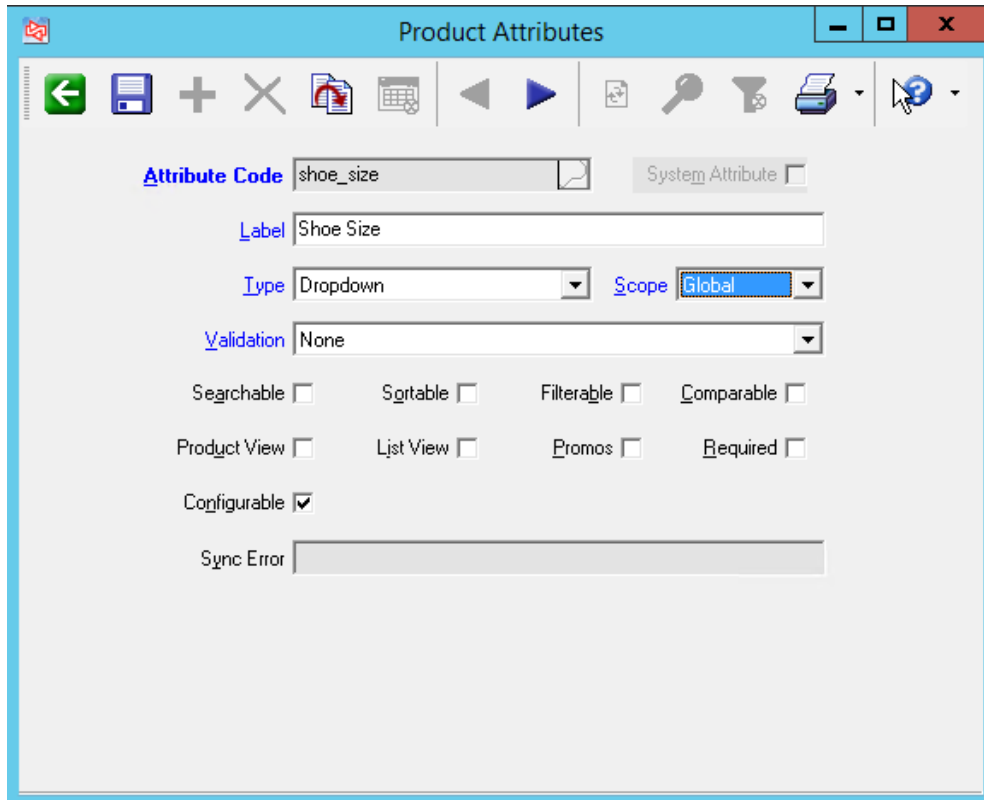
# Parent/Child Items

For a number of reasons in CounterPoint items that would normally be gridded are setup as separate items. Most commonly this is done to track variant specific pricing and costs. When selling these products online it is beneficial from a customer shopping experience standpoint to group these separate items together as configurable products.

## Creating a Parent Configurable Attribute

To get started, you must first create a configurable attribute (whatever it is that changes between the linked items, it could be size, color, width)

1. In Counterpoint, navigate to **CPCommerce > Product Attributes**
2. Create your attribute with the following settings
  - a. Attribute Code: Unique name for this attribute, must start with a letter and no spaces are allowed.
  - b. Label: Will display on the website next to the dropdown of available options
  - c. Type: Dropdown
  - d. Scope: Global
  - e. Configurable: Checked



Continue creating as many attributes as necessary to define your products.

## Creating a Child Value

Next, you'll need to define all of the different available options (values). If your attribute is Color your values might be blue, red, green, and black.

1. In Counterpoint, navigate to **CPCommerce > Product Attribute Values**
2. Create your values with the following settings
  - a. Attribute Code: The same unique code defined in the previous step *Creating a Parent Configurable Attribute*
  - b. Value Code: A unique code for this value
  - c. Label: The label to show to the customer when selecting this option
  - d. Sort Order: the position of this value in relation to the other values

Product Attribute Values

Attribute Code: shoe\_size

Value Code: 9

Label: Size 9

Sort Order: 90

Continue creating as many values as necessary to define all your options.



#### Sort Order

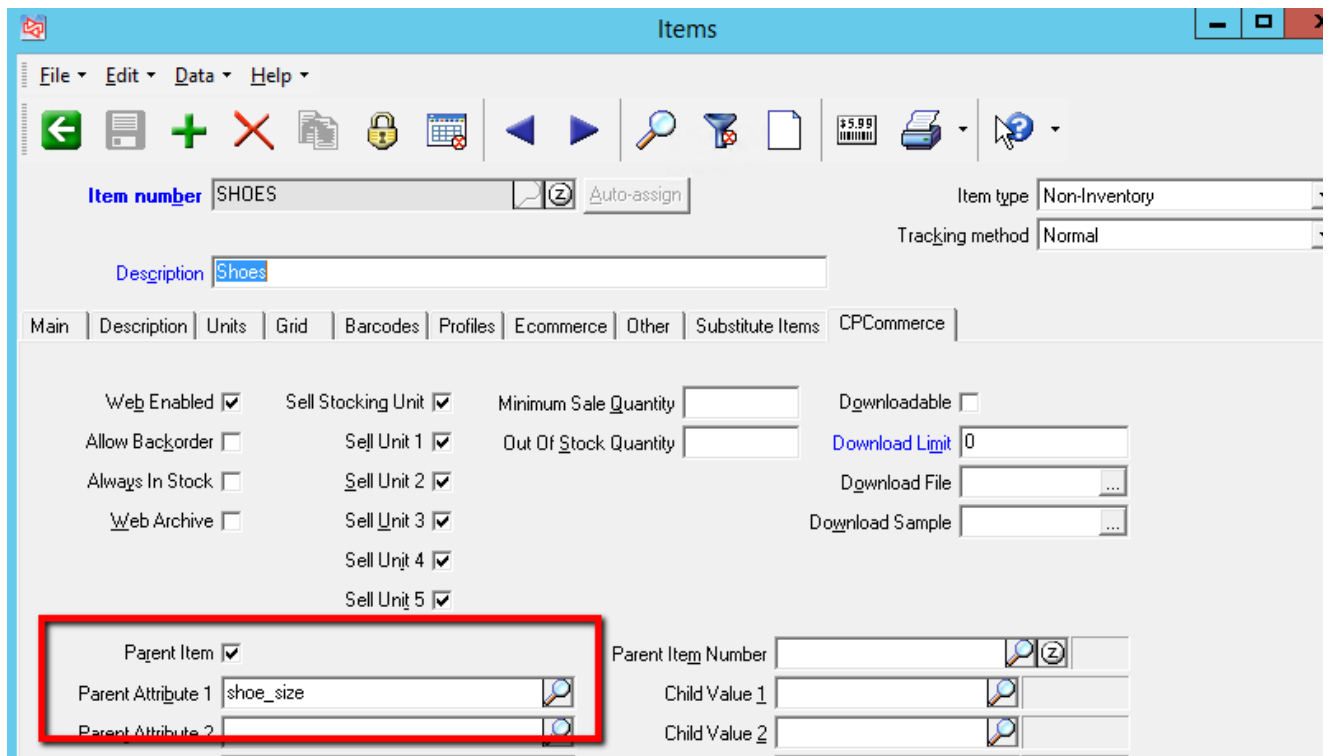
It is recommended to use sort orders in increments of 10. That way if you come back later with a value that should go in between two others, you don't have to shuffle around several different values.

If your values are numbered sizes, it's a good idea to mirror those sizes in the sort order so they're listed sequentially.

## Creating the Parent Item

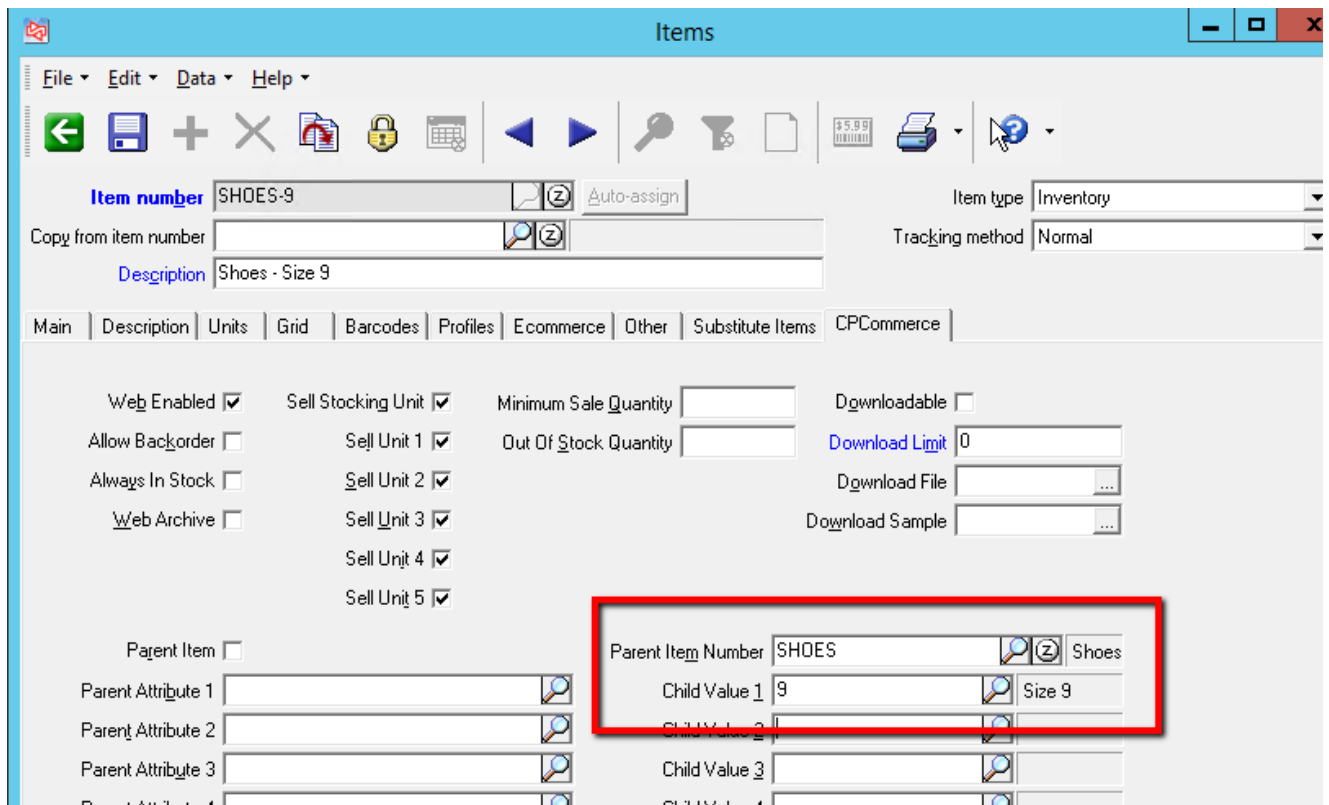
Next, you'll define the parent or umbrella item. This item is a non-inventory container item to tie all the child items together. Keep in mind that all of the visible attributes on the website will come from this item, this includes things like Ecommerce Category, description, attributes, etc.

1. In Counterpoint, navigate to **Inventory > Items**
2. Create an item with the following required values:
  - a. Main > Item Type: Non-Inventory
  - b. Main > Tracking method: Normal
  - c. Ecommerce > Ecommerce Item: Checked
  - d. CPCcommerce > Parent Item: Checked
  - e. CPCcommerce > Parent Attribute 1-6: This should be all of the attributes created in the first step *Creating a Parent Configurable Attribute*



## Linking Child Items

The child items should already be existing, you'll just need to go to each and assign the parent item number, along with any values for each of the attributes for that particular child.



Items

File Edit Data Help

Item number SHOES-9.5 Auto-assign

Copy from item number

Description Shoes Size 9.5

Item type Inventory

Tracking method Normal

Main Description Units Grid Barcodes Profiles Ecommerce Other Substitute Items CPCCommerce

Web Enabled  Sell Stocking Unit  Minimum Sale Quantity  Downloadable

Allow Backorder  Sell Unit 1  Out Of Stock Quantity  Download Limit 0

Always In Stock  Sell Unit 2  Download File

Web Archive  Sell Unit 3  Download Sample

Sell Unit 4

Sell Unit 5

Parent Item

Parent Attribute 1

Parent Attribute 2

Parent Attribute 3

Parent Attribute 4

Parent Item Number SHOES Shoes

Child Value 1 9.5 Size 9.5

Child Value 2


Child Value 3

Child Value 4

Continue linking all of your child items until you're done.

## End Result

Once everything syncs up, you should have a product on the website like this:



## Shoes

Availability: In stock

Item #: SHOES

**\$20.00**

---

Shoes

---

\* Shoe Size

Choose an Option...

Choose an Option...

Size 9


Size 9.5



1

+

-


ADD TO CART



 Add to Wishlist  
 Add to Compare

## A note about price

It is possible to list different prices for the different options. There are some display differences based on whether the parent price is set lower or higher than the child items. With the parent price set to the lowest amount of any of the children, the category view lists the parent price and then the dropdown has the price difference.

Sort By  



1 Item(s)



Shoes  
\$20.00

1 Item(s)




### Shoes

Availability: In stock  
Item #:SHOES


**\$20.00**


Shoes

\* Shoe Size

  
Choose an Option...




 Add to Wishlist

 Add to Compare

 Email to a Friend

Be the first to review this product



### Shoes

Availability: In stock

Item #: SHOES

**\$22.00**

---

Shoes

\* Shoe Size

Size 9.5

+  
-

ADD TO CART

- [Add to Wishlist](#)
- [Add to Compare](#)
- [Email to a Friend](#)

Be the first to review this product.

If you set the parent price to the highest amount of any of the children, the category view will list the parent price and sometimes an "As low as.." indicator, or simply a crossed out price for the lowest of the children depending on template settings.

Sort By Position ↑

1 Item(s)



Shoes

~~\$22.00~~

\$20.00



## Shoes

Availability: In stock

Item #: SHOES

**\$22.00**

Shoes

\* Shoe Size

Choose an Option...  
Choose an Option...  
Size 9 -\$2.00  
Size 9.5



## Shoes

Availability: In stock

Item #: SHOES

**\$20.00**

Shoes

\* Shoe Size

Size 9

1 + - ADD TO CART

Add to Wishlist